

OUR SUSTAINABILITY COMMITMENT.

**NZ
ME.**

NEW ZEALAND
MEDIA AND
ENTERTAINMENT



HOW WE PRACTISE SUSTAINABILITY

Keeping Kiwis in the know requires a broad commitment to sustainable practices and the wellbeing of our people and the wider community.

Tēnā koutou,

Keeping Kiwis in the know makes a powerful promise: that New Zealand Media and Entertainment (NZME) will make each day livelier, more informed, and more connected to the people and things that matter.

Delivering on our promise requires a genuine commitment to doing right by our customers, employees, and the wider community. When the people important to our business prosper and live better lives, only then can we say we did the job we set out to do.

Doing right requires a commitment to the craft of journalism and broadcasting; making NZME a safe and inspiring place to work; and championing the diversity of voices that make us Kiwis.

NZME's sustainability programme measures against the UN Sustainable Development Goals – an international blueprint to achieve a better and more sustainable future for everyone.

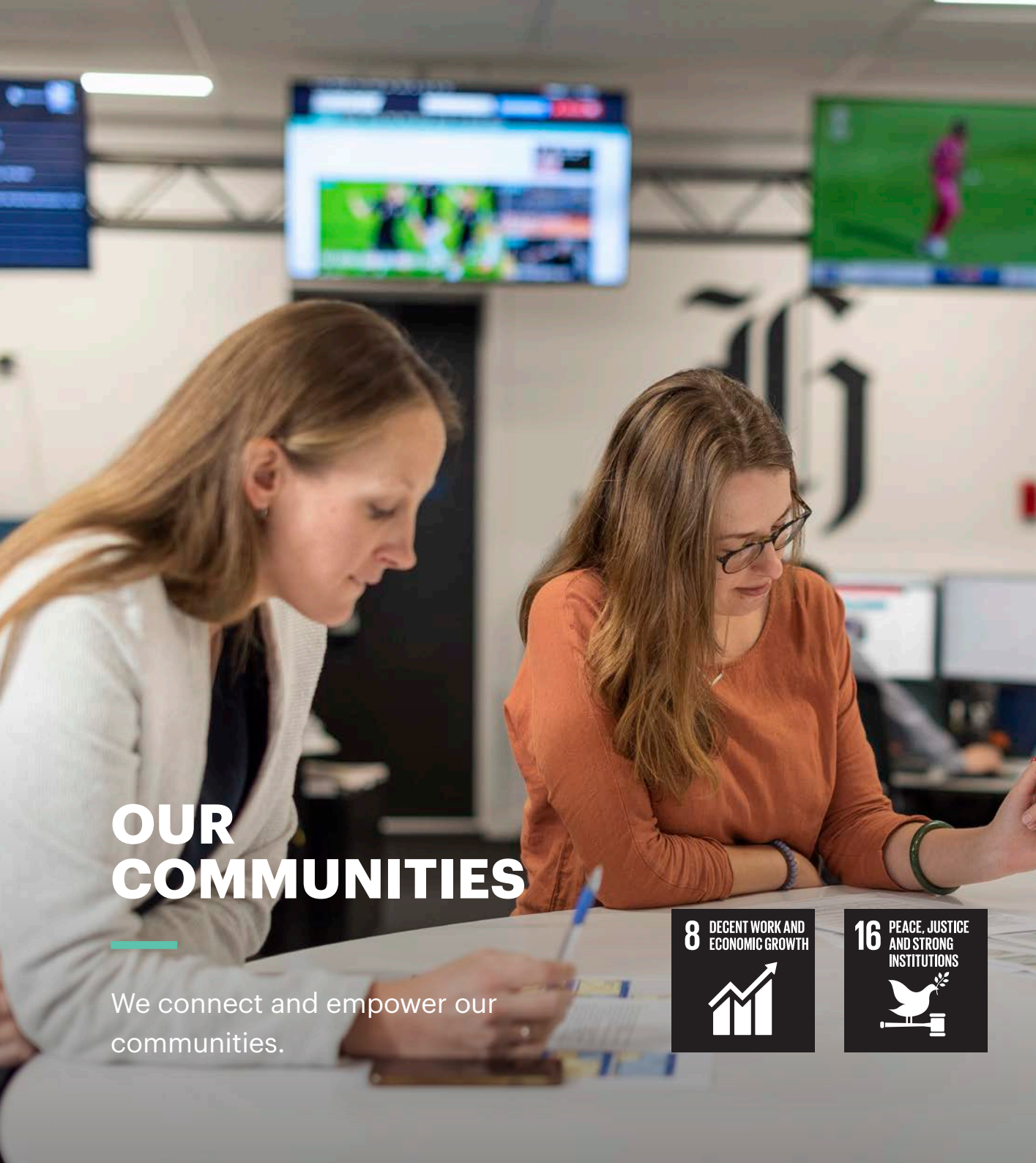
Combined with our promise to keep Kiwis in the know, NZME's commitment to sustainable practices assures the prosperity of our business and the future of our people, communities, and the wider world.

Ngā Mihi,

Barbara Chapman
Chairman

Michael Boggs
Chief Executive

We are committed to protecting the craft of journalism and broadcasting to keep Kiwis in the know.



OUR COMMUNITIES

We connect and empower our communities.

8 DECENT WORK AND ECONOMIC GROWTH

16 PEACE, JUSTICE AND STRONG INSTITUTIONS

RESPONSIBLE REPORTING AND BROADCASTING



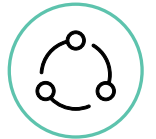
Through best practice broadcasting and journalism we will provide a diverse and balanced reporting platform, promoting the law and holding the powerful to account.

CONNECTING COMMUNITIES



We are deeply involved in our communities and as one of New Zealand's largest media platforms we will facilitate conversations about the topics that matter to Kiwis.

SHARING OUR PLATFORMS



We will use our wide reach across New Zealand to provide a range of opinion and ensure a diversity of voices.



PROMOTING A HEALTHY, DIVERSE AND SAFE WORKPLACE



We will embed a high performing health and safety culture and will regularly report on our performance. We will strive for a collaborative and welcoming place to work. We will adopt and strengthen policies for the promotion of gender equality and diversity.

CHAMPIONING THE CRAFT



We will ensure we are mentoring the next generation of journalists and broadcasters. We will develop our people to maintain and grow the craft.

EQUIPPING OUR PEOPLE



We will commit to offering our staff relevant and impactful training to create new opportunities for growth and innovation.

OUR PEOPLE

We provide a workplace that fosters innovation, engagement and inclusion.

5 GENDER EQUALITY

10 REDUCED INEQUALITIES

OUR ENVIRONMENT

We take our responsibility to the environment seriously.

11 SUSTAINABLE CITIES AND COMMUNITIES

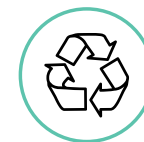


12 RESPONSIBLE CONSUMPTION AND PRODUCTION



RECYCLING

We will separate our internal waste streams – including paper, food and green waste, and recyclables – to optimise value and reduce environmental impacts.



BEST PRACTICE

We will maintain our print operation's Environmental Management System. We will collaborate with our suppliers and partners to ensure best practice sustainable operations.



RESPONSIBILITY

We will share our platforms to promote environmental issues impacting Kiwis including carbon emissions and climate change.



OUR SUSTAINABILITY COMMITMENT

We are committed to protecting the craft of journalism and broadcasting to keep Kiwis in the know.

OUR COMMUNITIES

We connect and empower our communities.



Responsible reporting



Connecting communities



Sharing our platforms

OUR PEOPLE

We provide a workplace that fosters innovation, engagement and inclusion.



Promoting a healthy, diverse and safe workplace



Championing the craft



Equipping our people

OUR ENVIRONMENT

We take our responsibility to the environment seriously.



Recycling



Best practice



Responsibility

NZME's sustainability programme measures against the UN Sustainable Development Goals – an international blueprint to achieve a better and more sustainable future for everyone.





NZ
ME.
NEW ZEALAND
MEDIA AND
ENTERTAINMENT