

NZME.

TRADES & SERVICES

MANAWATŪ 2026



Are your funeral wishes known? Is your will current?

At Robert J. Cotton Funeral Directors, we take pride in providing professional and personalised funeral care, along with the comfort of Lola the Funeral Therapy Dog.

Talk with our team today about funeral preplanning, including the prepayment plans we have available.

Palmerston North's longest family owned and operated funeral home.

06 355 2529 | admin@robertjcotton.co.nz | robertjcotton.co.nz

Follow us on Facebook!

ROBERT J.
COTT N
FUNERAL DIRECTORS
EST. 1967

MEMBER

Funeral Directors
ASSOCIATION OF NZ



This year's **Handy Trades Booklet** is packed with useful information about who to contact for all those jobs needed for both the interior and exterior of your home or property, whether it's in town or the country.

Notably, this year we've seen many businesses expanding their services to address the challenges of climate change, offering sensible and sustainable solutions.

that builders and related professionals are often booked months in advance, so it's wise to plan any major projects well ahead of time.

There are times when professional guidance and support are invaluable, whether you require the assistance of a lawyer, accountant, budgeting advisor, aged support service or healthcare professional. This Trades Book has been created to help connect you with trusted professionals and services to assist with your individual needs.

We hope you'll keep this handy reference booklet nearby, as you never know when you might need to replace curtains, find a painter or paperhanger, replace a window, seek legal services, repair your vehicle, or call on a plumber, builder, or contractor. You'll find it an excellent guide for both the small and large jobs that arise around your home or property.

Manawatū boasts a vibrant building and construction industry, rich with innovation and expertise that is second to none. It's home to some of the country's best and most skilled tradespeople. Remember

If you contact any of our advertisers, please mention that you saw their advertisement in the 2026 Trades Booklet.



Independent Funeral Director



"Where compassion meets care"

Phone: 06 560 3054 • **Email:** Info@gardenview.co.nz • **Website:** www.gardenview.co.nz



SLATE.CO.NZ

06 755 1144

16 TOTARA ST, LEVIN

-
- NEW HOMES
 - HOUSE & LAND PACKAGES
 - DESIGN & BUILD
 - TURNKEY OPTIONS
-

Proudly serving Manawatū, our integrated local team takes your new home from concept to completion, delivering remarkable results everytime.

Architecture
& Construction

Slate



Building eco friendly

If you are planning to build a new home, this is your chance to see what new eco-friendly products are on the market. There are many material options available, so you can choose what best suits your circumstances and home style.

Eco living has become a major priority for many people when building or renovating. They are thinking more about what they walk on, breathe in and sleep on.

When planning an eco-friendly home, make the most of natural light and ventilation. Designing a house that uses these natural resources

creates a healthier, more efficient living environment.

Choosing eco-friendly materials for flooring, cabinetry and insulation will help make your new home healthier and greener.

Take time to talk with builders. They can offer water-saving ideas, advise on solar power, lighting, alternative heating options and energy-efficient appliances. Some decisions need careful thought, such as window placement and the best use of light and heat. These are issues builders deal with every day.



Award winning Master builders

New Homes

Renovations

Extensions

Design & Build

Contact: Hayden Dam 0273442255
info@haydenhomes.co.nz
www.haydenhomes.co.nz




HAYDENHOMES

Building and Construction

Your home isn't just a roof over your head; it's one of the biggest investments you'll ever make. Whether you're buying, building, or giving your current place a serious makeover, the journey should feel exciting, not overwhelming.

In recent years, getting into the property market hasn't been easy. That's why more people are thinking creatively, custom builds, clever renovations, and homes that truly reflect their personality.

Building from scratch is like creating your own masterpiece. You get to choose the layout, the vibe, and all those minute details that make a house feel like your home. Want a kitchen that doubles as a social hub? Or a bathroom that feels like a spa? Go for it! And if you bring an architect on board, you'll add that extra layer of creativity and wow factor.

Of course, it's not all sunshine and mood boards. Building a home takes patience, planning, and the right team. Choosing

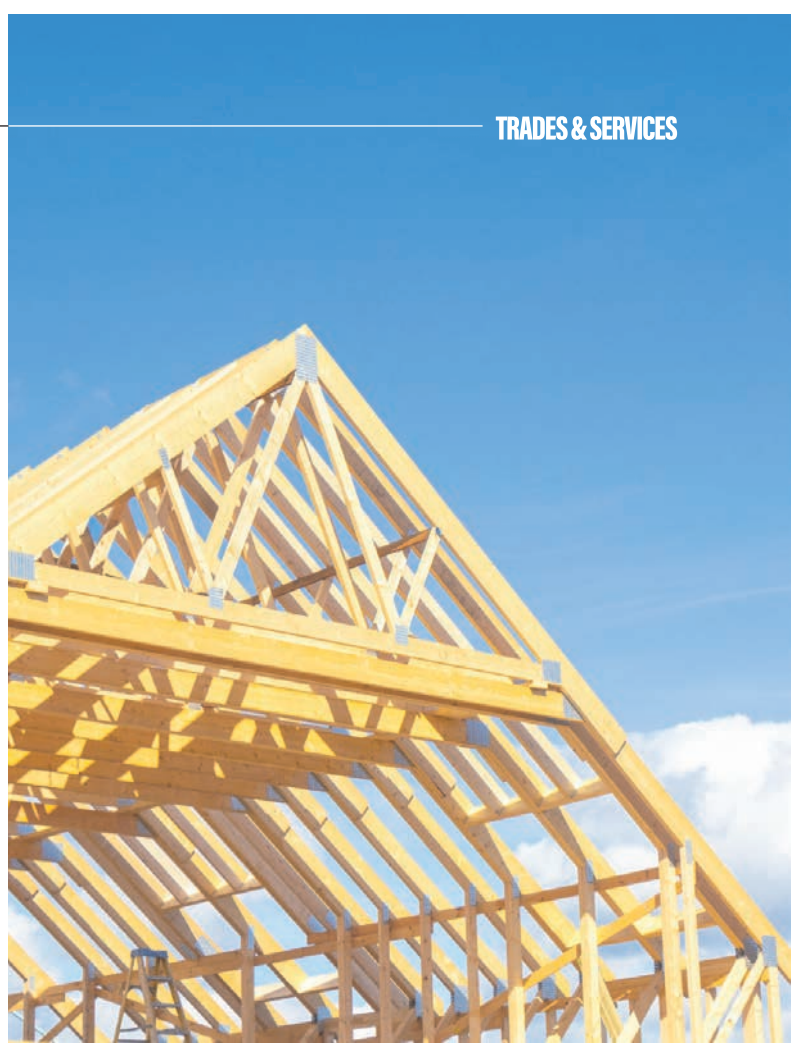
a reputable builder is non-negotiable. Look for builders who are members of the Master Builders Association because that means you'll get the Master Build 10-Year Guarantee, the ultimate peace of mind.

You need to do your due diligence. Start by researching and seeking recommendations from friends, family, or professionals like architects and real estate agents.

Ask for a list of recent projects to visit or contact references to ask about their experience, particularly on how the builder managed issues, and how he communicated throughout the entire job.

Your builder should handle all the boring stuff like permits and consents. They should take away a lot of your building stress by organising dependable tradies to assist in completing the job to your specifications.

Transparency and good communication, along with a professional job, are the key factors.



Buy your new farm building DIRECT FROM US

Quin's supply custom buildings to order, so if you don't see listed a size that suits your requirements please contact us to request a price based on your layout.

Quins offer different cladding options, spouting options, frame heights, roof pitch amongst many more options.



20 Conventry Street Levin
0800 784 628 | 06 367 9480
www.quinbuildings.co.nz



Mates Rates Insulation Limited

Looking for swift, efficient insulation for your home, rental property or new build?

Whether you're upgrading your existing insulation or building new, we offer reliable service and great value.

Call or email now to discuss your insulation requirements.

matesratesinsulation@hotmail.com | 027 972 1069

www.matesratesinsulation.co.nz



Gates, Gravel and Earthworks

The region is fortunate to have a robust network of agricultural and horticultural contractors. In addition to these generalists, there is a growing number of specialist operators who focus on niche services such as tree stump removal, hay and silage made and stored, dam reconstruction, retaining wall construction, gate manufacturing and bespoke landscaping projects.

Whether the work is rural or urban, contractors are equipped with an extensive range of machinery tailored to every scale and scope of operation. From large-scale equipment like diggers, graders, bulldozers, loaders, and trucks to compact tools such as bobcats, post

hole borers, and forklifts, local operators are well-prepared to meet diverse project requirements. Their capabilities extend to civil engineering, roading, excavation, earthmoving, and even logging operations.

Supporting these contractors are machinery hire companies and suppliers of aggregate, gravel, and topsoil, essential resources for both major developments and residential garden renovations.

The pride these professionals take in their work is evident in the quality of their results, a testament to the value of engaging experienced contractors for your agricultural, horticultural or even small landscaping job.



CONTRACTING
Formerly Taylor Tarseal

BITUMEN EXPERTS

- Chip sealing
- Bitumen spraying
- Driveways, access tracks & vehicle crossings
- Carparks & commercial yards
- Repairs & maintenance

Locally owned.
Reliable. Built to Last

Contact us today for a free quote
027 399 3995 | admin@bc-contracting.co.nz



HAWKEN

CONCRETE SERVICES




QUALITY CONCRETE AT COMPETITIVE RATES
022 315 2137 | jhawkenconcrete@gmail.com





Find us on

Hawken concrete services L.T.D

Roofing

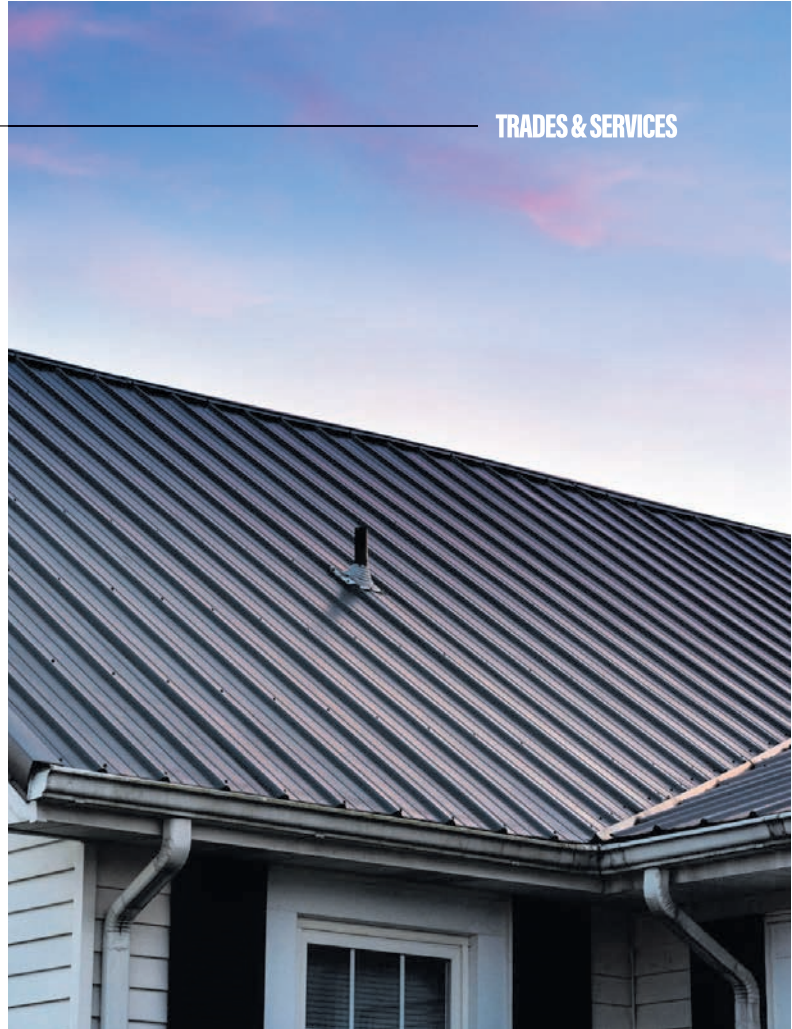
A roof protects your home against the weather, be it rain, sun, or snow and is a vital part of the structure of your house, and one that can sometimes be taken for granted until there's a problem like a leak, and then it becomes an emergency. Like most features of a home, they also need looking after and regular maintenance, as well as being kept rodent-proof. Birds and rats can be the biggest problems if they decide your roof is a great place to build their nest. Rats can eat wiring, and birds can use ducting as a cosy place to raise a family!

A roof should look good and also be functional but checking over a roof is not the sort of job for amateurs. It's dangerous and requires professionals to deal with issues, whether maintenance, re-roofing, repairing, or painting.

Roofing contractors will also deal with cleaning, mending broken gutters, replacing eaves, gutters, and downpipes. If you have clay tiles, they will need to be sprayed on an annual basis to prevent mould and lichen.

Make it a routine to visually inspect your roof often and call the experts if you notice something needs attention. You are better off doing this sooner rather than later.

Gutters are unavoidable and require cleaning quite often. While there are various products available to stop leaves from clogging them up, they will still need attention. Clambering up ladders and cleaning gutters isn't possible for many people, but there are plenty of skilled people available to do the job for you. Plus, often scaffolding is needed to be organised for many roofs.



YOUR ROOF OUR REPUTATION

PREMIUM ROOFING SOLUTIONS
ACROSS MANAWATŪ & THE LOWER NORTH ISLAND

WHETHER YOU'RE BUILDING NEW, REPLACING AN OLD ROOF, OR NEEDING REPAIRS DONE PROPERLY THE FIRST TIME.

R.J.S ROOFING DELIVERS QUALITY WORKMANSHIP BACKED BY OVER 18 YEARS OF INDUSTRY EXPERIENCE.

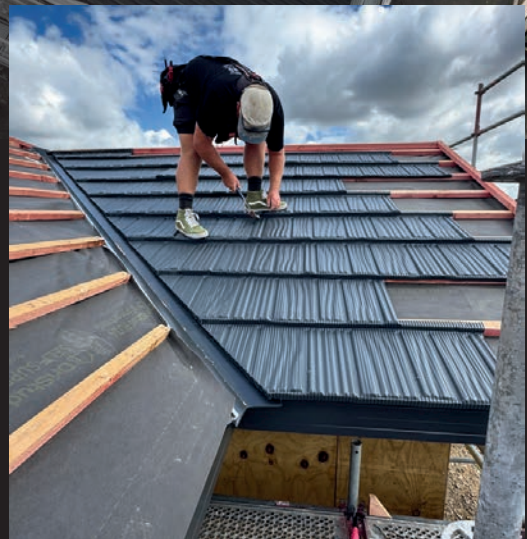
NEW ROOFS

RE-ROOFING

ROOF REPAIRS

LBP LICENSED

LONGRUN & METAL TILE



We pride ourselves on honest communication, reliable service and roofs built to last.

FREE NO OBLIGATION QUOTES

RJSROOFING BASED IN PALMERSTON NORTH

022 4566770

reece@rjsroofing.co.nz

WWW.RJSROOFING.CO.NZ

Caring for your roof is important

Proper roof care is essential for protecting a property, preserving structural integrity, and avoiding costly repairs. A well-maintained roof improves a building's appearance, extends the lifespan of roofing materials, and supports energy efficiency. Regular maintenance should be part of every property owner's long-term plan.

Routine inspections are recommended twice a year, particularly after heavy rain, strong winds, or storms. During these checks, identify cracked or missing tiles, rusted metal, damaged flashing, blocked gutters, or water pooling. Early detection of minor issues can prevent serious structural damage and lower repair costs.

Gutter and downpipe maintenance is also important. Leaves, moss, and debris can restrict water flow, causing

overflow that may damage roofing materials, fascia boards, and exterior walls. Keeping drainage systems clear lets rainwater move efficiently away from the property and reduces the risk of leaks and moisture damage.

In humid and wet climates, moss and algae growth are common concerns. These organisms trap moisture against the roof, accelerating wear and increasing the risk of damage. Gentle cleaning methods and scheduled roof treatments help maintain the roof's condition without harming protective coatings.

Tree maintenance also supports roof care. Overhanging branches may scratch roofing materials, block gutters, or create shaded areas that encourage dampness and moss.



Thresher Roofing Services LTD

Specializing in new construction long-run roofing & Cladding Specialists servicing the Manawatu

At Thresher Roofing, we specialise in creating durable, high-quality roofing solutions for both residential and commercial properties.

Whether you're building a new home or looking to refresh your existing roof, our long-run roofing systems offer reliability and longevity.

When you choose Thresher Roofing, you're selecting a team committed to quality workmanship, reliable service, and roofing solutions that stand the test of time.

With over 1000 successful projects under our belt, we've solidified our reputation as the go-to choice for residential and commercial roofing in Palmerston North.

Our owner Sam Thresher, brings over two decades of industry experience and leads a dedicated team of skilled crew members, admin staff, and trusted trade partners.



We're dedicated to getting the job done well.

022 3419437 | info@thresherroofing.com



Welcome to Roofing Industries



Over 25 Years of Experience in Metal Roofing & Cladding

Roofing Industries is New Zealand's largest privately owned manufacturer of metal roofing and cladding. With a skilled, close-knit team, we deliver innovative, high-quality solutions for residential, commercial, industrial, and rural projects.

RESIDENTIAL & COMMERCIAL ROOFING

We supply durable, visually appealing roofing systems engineered for New Zealand's diverse and demanding conditions. Our locally sourced materials and proven designs offer both performance and style for homes and businesses.

REROOFING SOLUTIONS

While we don't install roofs, we manufacture top-tier products for reroofing projects. Our Roofing with Style guide helps homeowners choose the right profiles and colours, and we can connect you with trusted installers.



**Built to Last.
Designed to Impress.
Guided by Experts.**



ELECTRICIANS

A registered electrician's job includes a wide range of tasks related to installing, maintaining, and repairing electrical systems.

You must use a registered electrician to ensure safety, compliance with building codes, and the proper functioning of electrical systems in homes, businesses, and industrial settings.

You need a Registered Electrician for wiring new homes or buildings, installing power outlets, light fittings, and switchboards, setting up heating systems, ventilation, alarms, and appliances and connecting buildings to the mains power supply.

When it comes to repair and maintenance, they will diagnose electrical problems and faults, repair your faulty wiring, fixtures, and equipment

and replace outdated, worn or damaged components. They will also test to ensure safety and performance

If you are upgrading switchboards or rewiring homes to meet modern standards, installing energy-efficient lighting or solar systems, make sure you use a registered electrician.

They will inspect and test electrical systems using specialised equipment and can provide Electrical Safety Certificates (e.g. in NZ: COCs - Certificates of Compliance)

They are qualified to work from architectural or electrical plans, understanding technical drawings and wiring diagrams.

With a registered electrician, you can feel at ease knowing that your home is in safe hands.

Trusted Local Electrical Services – Residential & Commercial

Windsor Electrical Ltd is a family-owned and operated business delivering reliable, high-quality electrical services across the residential and commercial sectors throughout the Manawātū.

BASED LOCALLY, WE PROVIDE A FULL RANGE OF ELECTRICAL SOLUTIONS, INCLUDING:

- Heat pump installations
- Rewires
- Switchboard upgrades
- Electrical alterations & repairs
- New builds & renovations
- General electrical maintenance

Whether you're building, renovating, or simply need something fixed, the team at Windsor Electrical is committed to professional workmanship, friendly service, and dependable results every time.

WHY CHOOSE WINDSOR ELECTRICAL?

- Family owned & locally operated
- Trusted residential & commercial expertise
- Quality workmanship
- Friendly, reliable service
- No-obligation FREE quotes



Contact Us Today:
windsorelectricaltd@icloud.com | 022 646 3940



Office/showroom:
7 Gladstone St, Feilding
Ph: 0800 272 363
www.apbelectrical.co.nz
e: sales@apbelectrical.co.nz



Glazing advice

When considering windows in your home, seeking advice from a qualified glazier can provide clarity and confidence in decision-making. A professional glazier offers expertise in measuring, cutting, installing, repairing, and replacing glass and related products across residential, commercial, and automotive applications. Their knowledge ensures appropriate solutions for your specific needs.

One option often suggested is double glazing. This uses two panes of glass separated by an insulating layer, typically filled with gas, to enhance thermal performance. Benefits include improved noise reduction, less condensation, and reduced heat transfer. As a result, homeowners often experience greater comfort, improved energy efficiency, and lower

power costs.

In New Zealand, double glazing became a requirement for new homes in late 2007, reflecting a nationwide focus on improved insulation and efficient energy use. Beyond thermal performance, it also protects interiors from harmful UV rays, reducing fading of furnishings and materials. It minimises moisture build-up from condensation on single-glazed windows and increases security, as double-glazed units are harder to break.

For homeowners considering an upgrade, it is not always necessary to replace every window at once. Prioritising colder areas, such as south-facing rooms, can deliver noticeable improvements in warmth and comfort. Even partial upgrades can make a meaningful difference to the overall living environment.



- Windows & Doors • Replacement Joinery
- Metro Series • Thermal windows & doors
- PVC windows & doors • Retro Double Glazing

FIRST
WINDOWS & DOORS

PH: 027 202 3447
06 374 8027

**Best Windows
& Glass Ltd**
11 Miller Street, Dannevirke

WE COME TO YOU!!

**Mobile Auto glass Repair/Replacement
anywhere in the Manawatu.**



- Chip Repairs
- Windscreen Replacement
- ADAS Recalibration

**PALMERSTON NORTH'S
#1 INDEPENDENT AUTO
GLASS REPAIRER**

Call - 0223899310
Info@fixautoglassnz.com
www.fixautoglassnz.com

FIXAUTOGLASS
MOBILE IN THE MANAWATU



Plumbers don't just unblock drains

When we have a leaky tap, a blocked toilet or water pouring out of places it shouldn't, we call the plumber.

This only touches the surface of what a plumber does.

Do you know that tree and plant roots can grow over twenty metres in search of water, and if you've ever dealt with a recurring drain blockage, there's a decent chance that tree roots are at the bottom of it.

It's simple biology why tree roots block drains. Trees need water, nutrients, and oxygen, and your underground pipes are just what they are looking for.

Cracks, loose joints, or porous surfaces in your drain can let out vapour or moisture.

Nearby roots sense it and start growing toward the source. Over time, those fine hair-like roots push their way in. Once inside, they expand, thicken, and form a dense mat that blocks the flow.

Signs you need to watch out for are slow-draining sinks, showers, or toilets, frequent gurgling noises, foul smells coming from drains and sudden overflows or backups, especially after rain.

If you're experiencing one or more of these, and you've ruled out food or hair clogs, it's time to look deeper and ring your local registered plumber.

They will inspect, diagnose, and lay out your options clearly. When it comes to tree roots in your drains, ignoring the problem will not make them go away!



SEMTEX

PLUMBING AND CIVIL CONTRACTORS

- General Plumbing Installs + Repairs
- Gas Fitting Services
- Gas Hot Water Systems
- Heating Supply & Installation
- Drain Cleaning & Unblocking
- CCTV Drain Inspections
- Pipe Relining
- Pumps & Filtration

0800 4 SEMTEX

WWW.SEMTEX.CO.NZ

Trusted Master Plumbers for professional, prompt and reliable solutions for residential maintenance, commercial projects and civil works.





Plumbing Problems? Call in the Pros!

You are handy around the house, and you've watched a few YouTube videos, got your toolbox ready, and think, "How hard can it be?"

But when it comes to plumbing in New Zealand, most of it is what's called "restricted work." That means it's illegal to DIY your plumbing, gas fitting, or drain laying. Why? Because one wrong move could lead to leaks, contamination, gas hazards, or a very unhappy insurance company.

And it's not just about fixing

leaks. Master Plumbers can help with everything from bathroom renovations, gas heating and hot water, as well as drainage and home water systems.

If it involves water, gas, or pipes, they've got you covered.

From leaky taps to full bathroom makeovers, plumbing is one job best left to the experts. So next time you hear that telltale drip-drip-drip, skip the wrench and call a Master Plumber. Because when the water's running right, life just flows better.

Henry's Plumbing

- Plumbing fit outs & home renovations
- Plumbing repairs & maintenance • Drainage
- Solar installations for hot water heating
- Log fire installations • Roofing repairs & maintenance

P: 0272762121 E: henrysplumbingltd@inspire.net.nz
www.henrysplumbing.co.nz



KIWI GREEN PLUMBING & DRAINLAYING LTD

Specialists in Septic & Water Tank Installations & Maintenance 30 years combined experience in the industry.

Trusted Family name Servicing the Lower North Island from Manawatu to the Wellington Region & across to the Wairarapa. Council Approved Septic Tank Systems. The widest range of solutions for the widest range of properties.

- Septic Tank Systems
- Septic Maintenance & Servicing
- Water Tanks & Pumps
- Emergency Call Outs

0800 424 783 or
027 243 6866

kiwigreenplumbing@gmail.com



We go further

Specialised in rural and town properties, from Dannevirke to Levin.



Certified Plumbers and Gasfitters.

Plumbing | Pumps
Water Filtration
Lifestyle Stock Water

www.ruahineplumbing.co.nz
Phone: 027 393 8594





We need to watch our health Beware of the A word... Asbestos!

What is asbestos?

The scientific term for asbestos is a naturally occurring fibrous silicate mineral. There are six types, all of which are composed of long and thin fibrous crystals, each fibre being composed of many microscopic "fibrils" that can be released into the atmosphere by abrasion and other processes.

Asbestos was predominantly used in the construction and building industry up until the 1990s. It became a popular building material due to its exceptional insulating and reinforcing properties as well as being fire-resistant.

Health and asbestos

Health risks occur when asbestos dust is inhaled or ingested. The fibres can become permanently trapped in the body due to their composition and can cause inflammation, scarring and eventually genetic damage.

It is the single biggest cause

of work-related disease deaths in New Zealand.

Where is it commonly found in your home?

Asbestos is often found in firmly bound material such as cement sheeting, flue pipes, roof shingles, floorboards, and lino. (Remember, we are talking pre-1990). There is also a form of loose asbestos, which can be found in hot water piping, domestic heaters, ceiling insulation, and stoves.

What do you do if you think you have asbestos in your home?

Identify and manage are the two words that stick in my mind after my experience, and I would tell anyone... if in doubt, call in a professional. They will advise, test, and if it is asbestos, they know the correct method of removal.

This way, you will keep safe from any potential health risks associated with asbestos.



Expert asbestos removal for cladding, vinyl flooring, textured ceilings, decramastic tiles, and asbestos-cement roofing - done safely and professionally.

asbestosrnz@gmail.com

027 570 1777



Property Management and Maintenance

Rentals

Managing a rental property can be time-consuming and often stressful, especially when balancing it with work, family, or other commitments.

A property manager takes care of the day-to-day tasks, such as advertising vacancies, screening tenants, scheduling repairs, and handling disputes, so you don't have to.

This frees up your time and removes the hassle of dealing with late-night maintenance calls or chasing overdue rent, allowing you to enjoy the benefits of your investment without the added pressure.

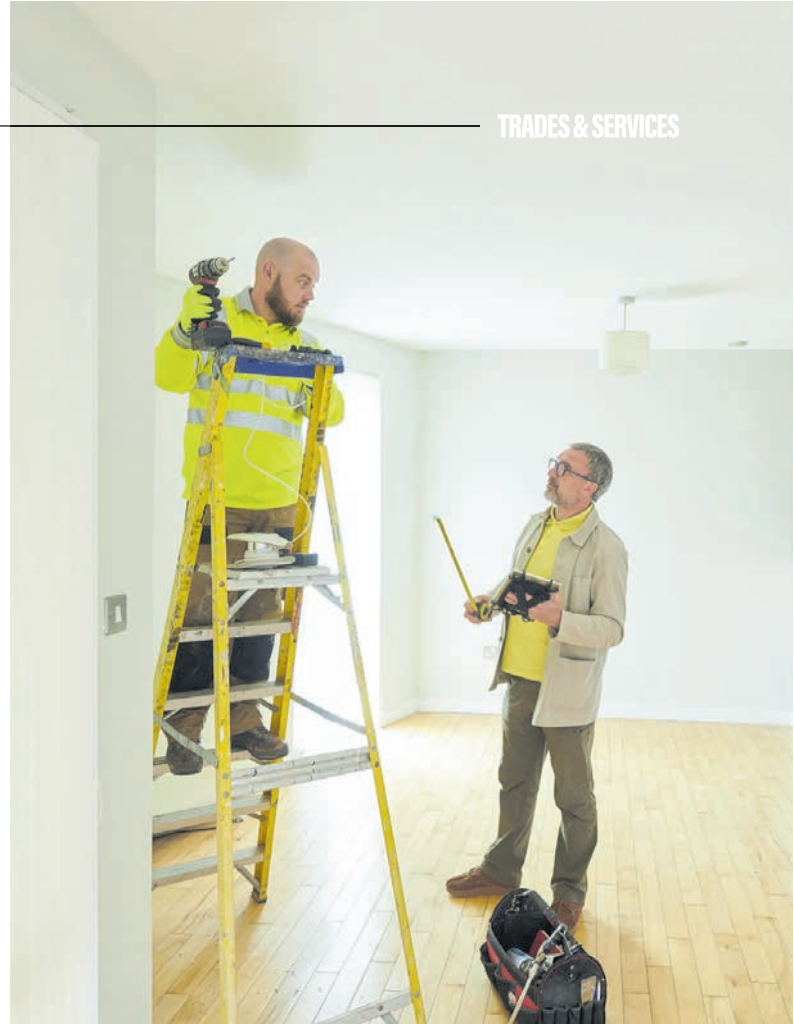
Property services

Are you moving home, not well enough to tackle cleaning or do you simply have a busy lifestyle with limited spare time?

Then check out the property service businesses in your area; they will take away all the stress of keeping your home as shiny as a new pin, leaving time for you to enjoy the things that are important to you.

Cleaning the exterior of your home is the job we all don't like doing! But if you want to prolong the life of your home, paintwork, roof, etc, then you need to make sure this is done annually.

When you clean an interior room, the rule is to start with the top and work your way down. The same rule applies when working outside. By starting with the top of your house, any debris that falls below can be cleaned up in the later stages.



VICTORIA LIDDICOAT



DIRECTOR | PROPERTY MANAGER



E: VICTORIA@DILIGENCEPM.CO.NZ

P: (06) 590 9122

W: DILIGENCEPM.CO.NZ



YOUR EXTERIOR CLEANING EXPERTS

- House soft washing • Commercial building washing
- Roof treatments • Hot wash • Water blasting • Window cleaning
- Spider/insect treatments • Gutter cleaning • Graffiti removal
- Fleet & heavy machinery washing • Dairy & wool shed cleaning
- Fence & deck restoration • Workshop floor cleaning

RELIABLE, PROFESSIONAL, AND READY TO GET THE JOB DONE RIGHT!



E: nick@centralpropertywash.co.nz

P: 0800 279 274

www.centralpropertywash.co.nz

ONE CALL. ONE TEAM. COMPLETE PROPERTY SOLUTIONS.

0800-779-6757

office@rpwl.co.nz | www.rpwl.co.nz



From small repairs to full building & renovation projects



MANAGH
ELECTRICAL

Electricity, heating & security — local reliable electricians



Garage doors, motors & remotes — supplied, installed & serviced





Changing your décor doesn't need to be costly

Cushions, rugs, throws, chair covers, bedding, and pillows are all examples of what can be practical, comfortable, and decorative, making it so much easier to change the feel of your room from winter to summer.

While the trend for neutral interiors has long been a favourite, there are signs that this trend is making way for more colour in the form of paint and wallpaper. It's possible to brighten up a room by experimenting with colour and texture, and all without breaking the bank.

Sustainability is a consideration these days, and we're seeing natural materials coming to the fore, which might be explained by the need for people to feel more grounded. Popular colours appearing in homes are pastel hues, olive green and other colours related to nature. The humble pot plant is also making

a comeback, and the selection in the garden centres has grown considerably over the last couple of years. Wool-filled pillows and duvets are becoming a more popular choice when it comes to bedding.

Floor cushions and rugs are seeing a revival, and what a difference a rug can make to a hard floor.

Bedrooms are receiving much more attention these days, and there's plenty to enhance the décor, be it masculine, feminine or for the children. Bedding, duvet covers, pillows, lighting and cushions can transform a functional room into a comfortable haven.

Having favourite pieces of furniture, such as a couch or a special chair, re-upholstered rather than throwing them out is another option. There are several experienced upholsterers still mastering this art locally.



Craig Rastrick

027 252 9424

info@dynamic-decorating.co.nz

Commercial / Residential

Interior / Exterior

New builds / Renovations

Roofs / Water blasting



HOME STAGING NZ

Professional Staging and Styling

Our purpose: getting you a faster, more profitable sale.

Mel 027 634 3182 | Richard 021 0222 4158

www.homestagingnz.co.nz

f Home Staging NZ @ homestaging_newzealand

Painters and Plasterers

When selecting a painter or plasterer, experience, workmanship, and professional reputation should be primary considerations. Engage a tradesperson who can demonstrate proven expertise in the specific services you require, whether interior or exterior work, renovations, new builds, or remedial repairs. Request examples of completed projects and seek client testimonials or references to assess reliability and consistency of finish.

In New Zealand, affiliation with recognised industry bodies such as the Master

Plasterers or the Painters Association of New Zealand reflects a commitment to professional standards, ongoing training, and adherence to best practice guidelines.

Plasterers play a vital role in preparing and restoring wall and ceiling surfaces, ensuring they are structurally sound, level, and ready for decoration. Painters then deliver the final aesthetic outcome, applying specialised coatings with precision and providing expert advice on colour selection, finishes, and surface protection to achieve a durable, high-quality result.



CBD Home Solutions

SPECIALISING IN RURAL PAINTING FROM KITCHENS TO COWSHEDS

NO BULL JUST PAINT



Old & New Property's
Interior & Exterior
Painting & Decorating
Spraying - Wallpaper Hanging
Repairs & Maintenance
Plus More!

SERVICING ALL THE MANAWATU AREA

0800 222 249 BRENDON 027 437 5769

www.cbdhomesolutions.co.nz  CBDpaintersmanawatu

Wallpaper can add an individual touch to your room

Over the years, you've probably admired gorgeous wallpaper in homes – elegant, textured designs that bring warmth and character to a space. You've also likely seen a few feature walls that were, shall we say, a little over the top. But that's the beauty of wallpaper: it's deeply personal. What delights one homeowner might be swiftly painted over by the next.

With thoughtful selection, wallpaper can breathe life into a room. It's transformative, expressive, and, if chosen wisely, timeless. But one lesson you may have learned the hard way is that wallpaper availability can be fleeting. Many designs are on the market for only two to three years. So if you're tempted to buy a few rolls now and finish

the spare room later, think again – you may find yourself short when it's time to decorate.

Today's wallpaper choices are far more inspiring than they used to be. There are stunning botanical prints, animal-themed designs, and papers that mimic quilting, gold leaf or hand-painting. These aren't just wall coverings; they're conversation starters.

Wallpaper is also practical. It can disguise imperfections and, with the right finish, reflect light in darker spaces. Modern wallpaper is versatile, mood-enhancing and – best of all – easily strippable. Gone are the days of scraping and peeling for hours. Samples are readily available, making it easier to visualise your space before committing.

ABODE

PAINTING & DECORATING

PREMIUM INTERIOR & EXTERIOR FINISHES

TRANSFORMING HOMES

Across Manawatu

- ✓ Interior & Exterior Painting
- ✓ New Builds & Renovations
- ✓ Specialise in Wallpapering
- ✓ Detailed Finishes

We take pride in delivering **high-quality, long-lasting finishes** using proven systems and premium products.

Dulux

ACCREDITED
PAINTER



PROFESSIONAL,
CLEAN & RELIABLE



ATTENTION TO DETAIL
– NO SHORTCUTS



TRUSTED
LOCAL BUSINESS



021 424 786



Abode.paintingnz@gmail.com



www.abodepainting.co.nz

QUALITY WORK THAT SPEAKS FOR ITSELF

Signage

Modern signage firms do far more than simply make shop signs. Today's signage companies combine design, branding, technology, manufacturing and installation services to help businesses stand out and communicate effectively with customers.

A signage firm will often begin by working with a client to understand their brand, location and marketing goals. They then design signage that reflects the business image while also being practical, readable and compliant with local regulations.

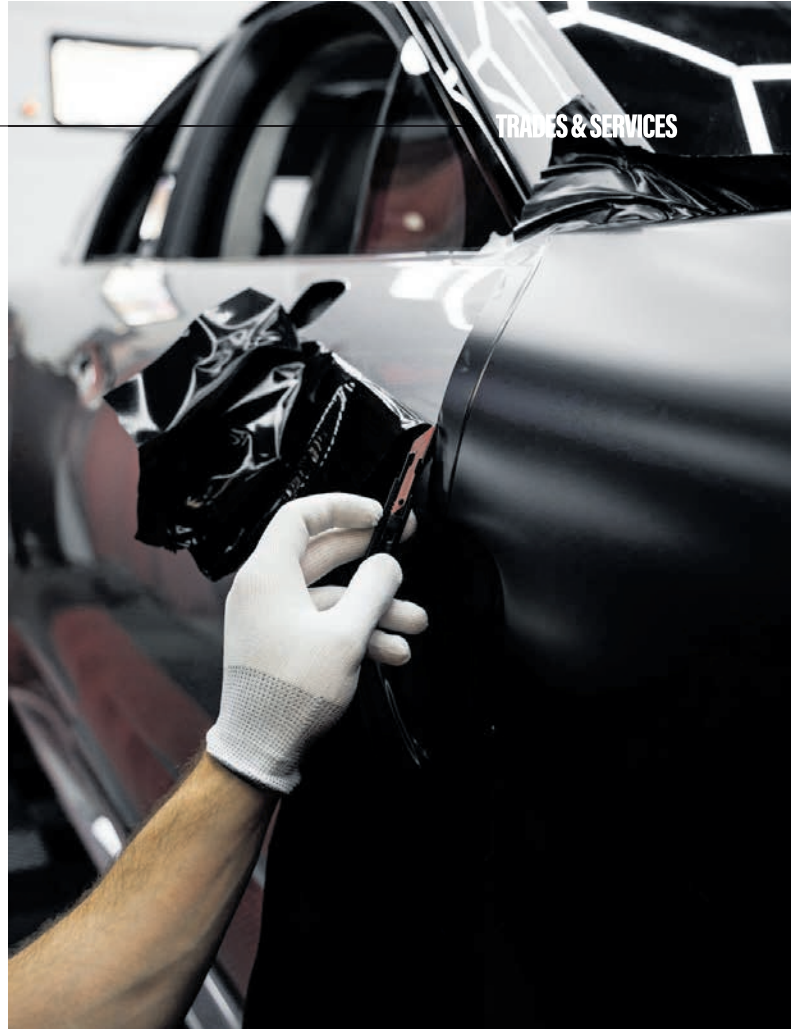
Their services can include Shopfront and building signage, vehicle wraps and fleet graphics, event and promotional displays, billboards, and large-format printing, as well as interior office branding and wall graphics.

Many firms now use advanced technology such as computer-aided design, laser cutting, CNC routing and

digital printing to create highly customised products. Digital signage has also become increasingly popular, allowing businesses to display changing advertisements, menus, promotions and information in real time.

Installation is another major part of the industry. Professional signage firms ensure signs are safely installed, weather-resistant and positioned for maximum visibility. Some companies also provide ongoing maintenance, repairs and updates.

In today's competitive marketplace, signage firms play an important role in helping businesses build brand recognition and attract customers. Effective signage can create a strong first impression, improve customer experience and act as a powerful form of advertising twenty-four hours a day.



Making Nationwide Signage Easier

With a network of 28 stores nationwide, from design to installation, we offer a complete signage solution to ensure your signage is brand compliant right throughout the country.



**DEAL WITH ONE PERSON
AND ENSURE BRAND
CONSISTENCY ACROSS
YOUR NETWORK**

For all your brand needs
call our team:

06 359 5166

Trade Show Displays | Neon & 3D Letters | Illuminated Signs | Banners
Vehicle Graphics | Building Signage | Digital Signs | Retail Signs | Safety Signs



Speedy Signs
grow your business faster



Servicing your vehicle is important

How often do you get your vehicle serviced?

Making sure your vehicle is regularly serviced is essential to ensure safety, reliability, and longevity, preventing minor issues from becoming expensive repairs.

It keeps components like brakes and tyres in optimal condition, improves fuel efficiency, and maintains high resale value.

Many garages now offer convenient text reminders for Warrant of Fitness (WOF) checks and routine services, making it easier to stay on top of your vehicle care.

Modern vehicles are equipped with advanced electronics and diagnostic systems, which require trained professionals to identify and resolve issues accurately. Gone

are the days of quick fixes under the bonnet, as today's technology demands expertise.

Fortunately, there is a wide range of qualified mechanics and service providers available. From comprehensive servicing and diagnostics to specialised offerings such as tyre and muffler fitting, battery replacement, and audio system installation, you'll find professionals ready to assist.

Skilled panel beaters and windscreen repair specialists are also on hand to address those inevitable chips and cracks.

Keep an eye on your tyres and remember to replace them when the tread is getting low.

Invest in regular servicing and professional care because your safety and peace of mind are worth it.



**DARKSIDE
DETAILING™**

PREMIUM VEHICLE
DETAILING
& CERAMIC COATINGS



CERAMIC
COATINGS



PAINT
CORRECTION



FULL VEHICLE
DETAILING



FEYNLAB™
CERTIFIED CERAMIC INSTALLER

PREMIUM VEHICLE CARE
PALMERSTON NORTH

📞 027 216 8360

🌐 www.darksidedetailing.co.nz

📍 Palmerston North



GET A QUOTE
SCAN QR CODE

COLLISION REPAIR

From small dents to major collision repairs, **James & Kingsbeer Collision Repair** can get your vehicle back into shape.

We provide high-quality workmanship, professional service, and reliable repairs for insurance, business, and private customers. Whether it's paint touch-ups, rust repairs, or a complete respray, our experienced panel beaters and painters deliver results finished to the highest industry standards.

As a **trusted local service**, we're committed to getting your vehicle back on the road - **and looking it's best.**



INSURANCE
REPAIRS



COLLISION
REPAIRS



DENT & RUST
REPAIRS



STRUCTURAL
REPAIRS



SPRAY PAINTING
& RESPRAYS



PAINT
TOUCHUPS



COLOUR
MATCHING



06 357 5476

140 Fairs Road, Milson
Palmerston North
info@jamesandkingsbeer.co.nz









CASH FOR CARS DEAD OR ALIVE

**FAST
PICK UP**

**FREE
QUOTES**

All Makes, All Model of cars, vans, 4x4

Damaged, unwanted, old and unregistered we will remove it

Towing also available -
Manawatu, Wellington & Wairarapa

NZ Owned and Operated

022 455 7882

Automotive air conditioning

Your vehicle's air conditioning system requires regular maintenance to ensure reliable performance and efficient cooling, especially during the warmer months. When functioning correctly, your AC system should deliver consistent, cool airflow throughout the vehicle.

One of the most common causes of reduced AC performance is a dirty or blocked cabin air filter. Dust and debris restrict airflow, forcing the system to work harder while significantly reducing cooling efficiency. Other common issues include dirty condenser coils and low refrigerant gas levels, often caused by leaks within the system. Typical warning signs may include weak cooling performance, ice buildup, and extended operating times.

To maintain optimal performance, most manufacturers recommend servicing your vehicle's air conditioning and heating system at least once a year. A professional inspection should always be carried out before recharging the system with refrigerant. This allows trained technicians to identify leaks, worn components, or other underlying issues that may affect performance.

Automotive air conditioning servicing generally includes a complete diagnostic assessment, repair or replacement of faulty components, refrigerant testing and recharging, operational testing, and system cleanup. A qualified technician will explain all recommended repairs and services before any work is undertaken.



MAX AC
021 276 2922
info@maxac.co.nz
www.maxac.co.nz

- * Air Conditioning & Heating Performance Diagnostics Check
- * Approved Filler Certified under WorkSafe NZ Regulations
- * Odour Removal & Full Cab Cleaning Service



- * Farmlands Card - Accepted here
- * Leak Detection & Hose Repair
- * Cooling & Heating Systems
- * Service Plans & Repairs
- * Annual Fleet Servicing
- * Cabin / Pollen Filters
- * R1234yf Regas
- * R134a Regas

*A/C removes moisture fast
for clear windows,
and safer mornings*



All Vehicle Types:

Car, Ute, Truck, Agricultural & Earthmoving

**On-Site Automotive
Air Conditioning Specialists**

Computer Support Services

Having support services for your computer is handy for several important reasons

We are not all tech savvy, and there is nothing worse than having a big assignment to finish on time, and you end up having a computer glitch. When you need it repaired and fast, it is comforting to know that there is support service available.

When something goes wrong, like a software crash, virus infection, or hardware glitch, support services can help fix it quickly, minimising downtime.

Support teams are trained professionals who can guide you through complex technical issues that might be difficult to solve on your own.

If your files are at risk from malware or accidental deletion, support services can help with data recovery and backup solutions.

Instead of spending hours troubleshooting a problem, getting stressed, and not being able to solve the problem, you can get help right away, saving you time and frustration.

Support services often help keep your system updated and secure, which improves performance and prevents future issues.

They can help tailor your system to your needs, as some of us only need the basic programmes, while the needs of others may be more complex.



Google ★★★★★

We Provide IT Solutions in a timely and money saving manner for over 30 years for single users to large corporates



- Business computer repairs and servicing
- New and ex lease computers
- Custom-built PCs and out-of-the-box solutions
- Data recovery
- Data transfer
- Laptop and PC repairs and upgrades
- Onsite technicians
- Insurance quotes
- Software solutions
- Workshop / onsite technicians

www.inhouse.co.nz
sales@inhouse.co.nz

Support Local

The Tech Guys

Mobile Tech Support

Computer Repairs
Internet/Email
Virus Removal
Data Recovery
& More!

info@techguys.nz
0800 832 429

afterpay

How professional advice can boost success



These professionals are trained and certified in their fields, which means they understand complex laws, tax codes, financial regulations, and industry standards better than most non-experts. Their expertise and knowledge is invaluable.

Accountants and bookkeepers can manage financial records and reporting with precision, reducing the risk of errors that can lead to penalties or missed opportunities. It is all about accuracy and efficiency.

By outsourcing legal, financial, and administrative tasks, this frees up your time to focus on what you do best.

Professionals can identify

legal or financial risks early and help you avoid costly mistakes, audits, or legal disputes.

Advisors and accountants can help you plan for growth, optimize your taxes, and make informed decisions that align with your goals. They are good sounding boards when decisions are to be made.

When it comes to compliance, legal and financial professionals ensure you're meeting obligations and deadlines, such as filing taxes, managing payroll, or adhering to business laws.

Knowing that qualified professionals are handling crucial aspects of your life or business can significantly reduce stress and uncertainty, giving you peace of mind.

“Helping Passionate Business Owners achieve their goals doing what they love!”



At Advanced Accounting, we value the relationships we build with our clients and take pride in supporting businesses across a wide range of industries. Whether you're doing business in your gumboots or in the boardroom, we're here to help you set goals, grow with confidence and optimism, and achieve success through your business.

06 323 5997 | www.advancedaccounting.co.nz



ACCOUNTING & TAX



ADVISORY & DEVELOPMENT



FARM ACCOUNTING



BUSINESS ACCOUNTING

Honouring, remembering, and healing

Funerals are a means of expressing beliefs, thoughts, and feelings about the passing of someone we love, with every service being unique and personalised.

We are all individuals, and our funeral needs to be reflective of the life we have led and the person we have been.

The remembering, deciding, and reflecting that takes place in the planning of the service are often an important part of the process of grief and mourning.

Ultimately, this process of contemplation and discovery creates a memorable and moving funeral experience for all who attend.

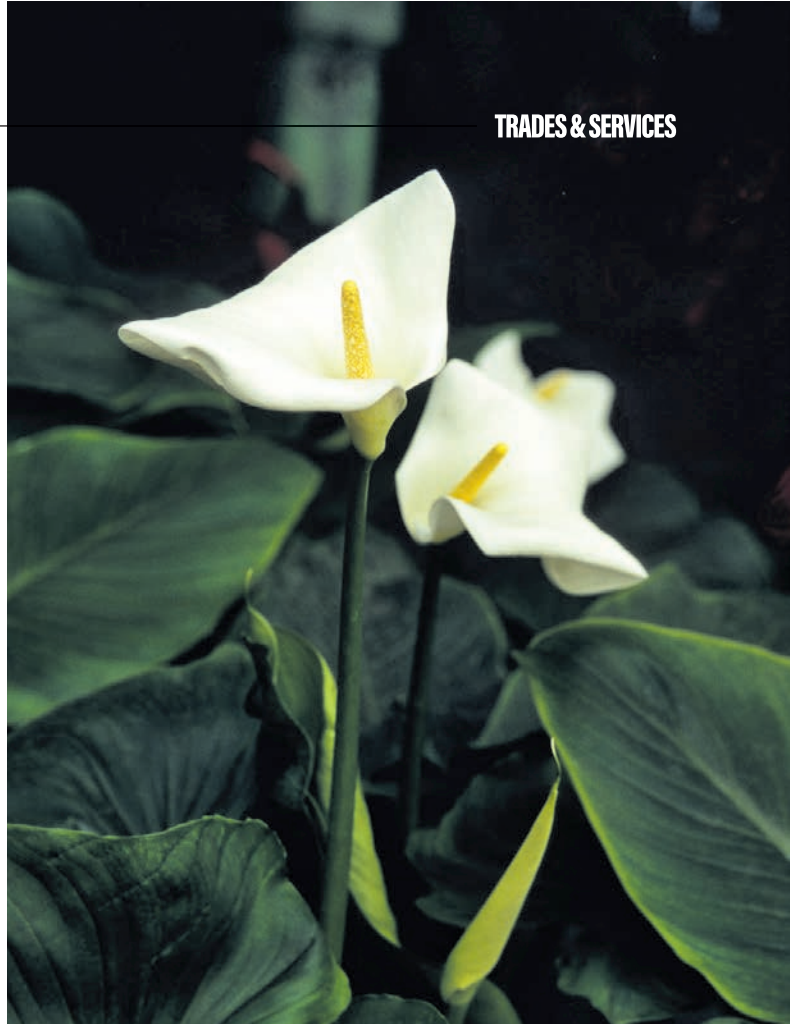
For anyone who has not

had to deal with funeral arrangements, when the time arrives, it can seem daunting.

It makes it so much easier on loved ones if you have made provisions for your funeral wishes early on, but you have the comfort of experienced funeral homes to advise and help guide you and your family through the process.

They will discuss the various options available to you, which in turn will help you make decisions fitting for your loved one.

They are professionals in their field and are there to provide support, compassion, and information to help you through your journey of grief and the celebration of your loved one's life.



Helping Families Through Life's Hardest Moments.

Advertorial

Why Funeral Preplanning Is More Important Than Ever.

Have you ever asked someone whether they want to be buried or cremated and they've replied, "I don't care, I'll be dead"? The reality is, those decisions don't disappear. They fall to the people left behind.

Unlike a wedding, which may take one to two years to plan, a funeral service often takes place within three to five days of a loved one passing. Add family dynamics, emotion, financial pressure, and whether the death was expected or sudden, and things can quickly become overwhelming.



Lola the Funeral Therapy Dog.

Bank accounts may be frozen, probate takes time, and funeral insurance claims are often subject to assessment.

With the cost of living and so much uncertainty, more people are thinking ahead and choosing to prepay their funerals for added security.

That's where funeral preplanning can make a real difference, particularly with the average cost of a funeral service now sitting around \$12,000 to \$15,000. With a funeral prepayment, funds are held securely in our ANZ Funeral Trust Management Account until they're needed, with any unused balance refunded to the estate.

We can also record important information for Births, Deaths and Marriages, such as marriage details, parents' names and occupations. It means families don't have to find that information under pressure.

If you're beginning to think about retirement or rest home care for yourself or a family member, we're here to help. And of course, Lola the Funeral Therapy Dog always loves a pat!



Nate Mitchell, Lou Beneteau, Ross Carey, Brent Le Quesne, Hayden Cotton, Kylie Cotton & Lola Cotton.



697 Main Street, Palmerston North
 robertjotton.co.nz

Rural services for large or small properties

There is an excellent choice of specialised rural service providers in the Manawatu area. It's a diverse industry offering plenty of agricultural and associated services. Sometimes it can be some practical everyday advice you need for your lifestyle block or small farm.

There are now businesses concentrating on properties with just with a few sheep and a small quantity of fencing required. These small block service providers offer such services as weed spraying, farm minding, and general maintenance.

There are a vast range of rural providers supplying the rural community from timber suppliers, fence and trough manufacturers, stock and station agents, cereal and feed merchants, as well as suppliers of animal products and animal care to pest control, the rural community is being well catered for.

Garages, farm buildings, sheds and workshops and other rural buildings can be purchased locally with a kitset

option making the process cost effective and if it is a chook house you need, yes you will find even the chooks are catered for!

When it comes to cropping, there are companies that specialise in steep hill country work including cultivation, direct drilling, drilling, earth moving, fertiliser spreading and spraying, land clearing and development, mulching, ploughing and precision planting.

On the equipment side there is also plenty of choice whether you need to hire a crane, forklift, or an elevated work platform as well as haulage companies offering a range of cartage options, excavation services, fertiliser spreading, line haul and general cartage.

And don't forget our rural delivery person who always comes to the rescue when out of milk and need a parcel brought out to the farm or a letter collected, they are the farmers lifeline!

So, whatever the size of your farm or business local suppliers has all your needs covered.



HODGE FENCING **FARM CONTRACTING & EXCAVATION SPECIALISTS**

Your Rural and Residential Fencing Contractors.

Servicing the Manawatu, Rangitikei, Whanganui and Wairarapa regions.

📞 Cody 027 358 5761
Seth 027 274 4080
✉️ hodge.farming.contracting@gmail.com

- Rural & Farm Fencing
- Post & Rail Fencing
- Post, Wire & Batten Fencing
- Boundary Fencing
- Deer Fencing
- Sheep & Cattle Yard Construction
- Residential Fencing & Decks
- Subdivision Fencing
- Land Clearing
- Farm Races & Track Building
- Farm Races & Track Maintenance
- Farm Drainage
- Farm Dams & Culverts



hodgefencing.co.nz

FIND US ONLINE



DAVID BROWN SPECIALISTS & ALL OTHER MAKES AND MODELS

CASE IH
FIAT
NEW HOLLAND
FORD

KUBOTA
DAYDONE
SAME
JOHN DEERE

ISEKI
McCORMICK
MASSEY
FERGUSON



133 South Street, Feilding
06 323 1080 | 027 44 22 456
feildingtractors2018@xtra.co.nz



**Delivery
from \$30
incl gst**

GARDEN MULCH from \$60 per m³ incl gst
BLACK MULCH from \$160 per m³ incl gst



Garden MULCH



BLACK MULCH

PLAYGROUND MULCH
Is the answer for your playground surface.

**Please get
in touch for
a quote**



PLAYGROUND MULCH

027 357 8999 | Enquiries@megamulch.co.nz



Proudly locally owned and operated, Sense Mobility is a New Zealand business based in Palmerston North, supplying premium mobility scooter and powerchair accessories nationwide.

At Sense Mobility, we are passionate about creating practical, stylish, and reliable accessories that make everyday mobility safer, easier, and more enjoyable. We combine innovative design, exceptional quality, and affordable pricing with friendly service you can rely on.

Our range includes: • Scooter Backpacks suitable for all mobility scooters • Mini-Scooter Backpacks designed for travel scooters • Wheelchair Bags • Armrest Bags for mobility scooters and powerchairs • Wet Weather Ponchos • High-visibility Front Basket Covers • Headrest Covers • Console Covers

Why choose SenseMobility?

- We design our own products
- We listen to our customers and design products to meet real everyday needs
- We are friendly, approachable, and customer focused
- We prioritise safety with functional, attractive designs that improve visibility
- We are committed to exceptional quality across our entire range
- We believe you shouldn't have to pay more for the quality you deserve

Sense Mobility – Sensible mobility accessories at sensible prices.



You can find a list of our suppliers on our website at www.sensemobility.co.nz



**RANGITIKEI
HIRE CENTRE**

YOUR LOCAL HIRE EQUIPMENT SPECIALISTS.

- Access Equipment
- Trailers
- Small Diggers & Excavators
- Chippers
- Farm & Lifestyle
- Wood Splitters
- Building & Renovation
- Home & Garden
- Civil
- Trucks & Machinery
- Rollers & Compactors
- Concreting Equipment
- Chainsaws

*Locally owned
& operated with
good old small
town service &
advice*

rangitikeihirecentre.co.nz
31 Russell Street, Marton. 06 327 4473

Our local retailers, hireage and mobility

We are fortunate to have a wide range of services available in our town.

As the cooler months arrive, vehicle batteries are more prone to failure, and there is nothing worse than being stranded on a country road with a vehicle that will not start. It is advisable to have your battery tested and replaced if necessary, before this occurs.

Winter is also a common time for renovation and cleaning projects. When undertaking such work, it is worth considering whether to hire or purchase equipment. While many people prefer to build their own collection of tools, hiring can often be the more practical and cost-effective option.

Hiring equipment is a sensible solution for businesses and individuals

who require access to specialised machinery without the high upfront cost of ownership. It supports cash flow management, reduces maintenance obligations, and provides access to modern, well-maintained equipment as needed.

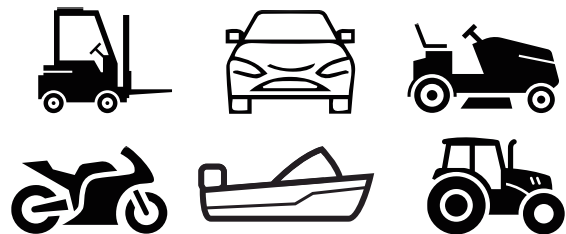
For those purchasing mobility equipment locally, there are additional benefits. Local suppliers offer the opportunity to trial products for comfort, fit, and safety before purchase, along with personalised advice, installation support, and ongoing maintenance or repair services. In-person service also simplifies returns and warranty processes.

Overall, supporting local businesses helps sustain the community, strengthens the local economy, and enhances convenience for residents.

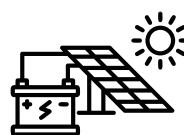
LOCALLY OWNED AND OPERATED
COMPETITIVE PRICING, QUALITY PRODUCTS

dcpower
BATTERIES

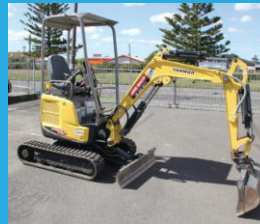
SPECIALISTS IN
BATTERIES & CHARGERS



EXPERTS IN
RV SOLAR SYSTEMS



WWW.DCPOWER.CO.NZ
(06) 359 0834
187 JFK DRIVE, PALMERSTON NORTH



Diggers / Chainsaws / Compactors
 Concrete Equipment / Access Equipment
 Tipper Trucks / Portable Toilets
 Chiller Trailers / Generators / Augers
 Paint Sprayers / Mowers / Chippers



If you don't want to buy it, HIRE IT

30 Aorangi St, Feilding P: 06 323 8271 w: hireshopfeilding.co.nz



STIHL SHOP FEILDING
 30 Aorangi St, Feilding
 P: 06 323 8271
www.stihlshop.co.nz/feilding



#1 BRAND IN GARDEN POWER TOOLS



WATER FILTRATION

water purification solutions

- **UV System**
- **Whole house systems**
- **Under bench**
- **Fridge filters**
- **Solutions for your water**

Experience cleaner, better-tasting water with Manawatu-based **The Better Water Company's** water treatment systems.



Whanganui - Rangitikei - Manawatu - Tararua
Wairarapa - Feilding - Marton - Bulls - Ashhurst

Freephone 0800 800 938